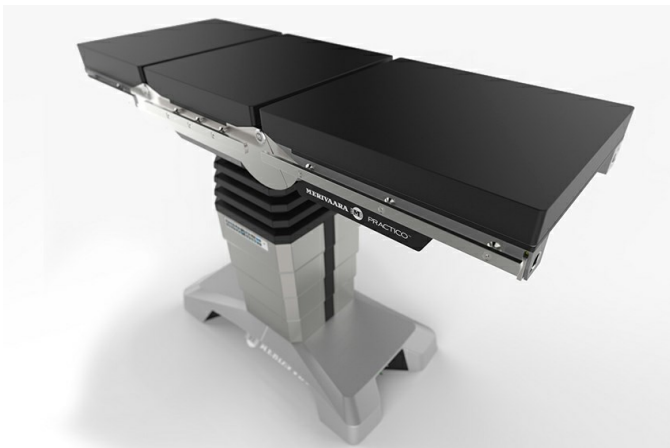


SMARTER PRACTICO

The versatile operating table Practico has been designed to improve ergonomics with the industry's widest range of posture possibilities. It is powered by smart controls that help you work more fluently.



SUPER HIGH AND SUPER LOW

Improved ergonomics. Three different models, with motorized



STREAMLINED DESIGN

Human-centric design at its best. Perfect C-arm access. Easy to

leg sections as option.

The new smarter Practico is one of the lowest mobile tables in the market!

HIGH SWL

Stronger than ever. The new smarter Practico has improved safe working load and width extenders to help you to treat every patient regardless of their size and shape.

keep clean even in the busiest patient flow situations. No mechanical pedals.

SMART FEATURES

Practico is easy and intuitive to use. The user interface is similar to other Merivaara's products. Smart features also include for example safety sensors and memory positions.

FENNIAPRIZE 20

HONOURABLE MENTION

FENNIA PRIZE 2020 HONOURABLE MENTION

Smarter Practico® by Merivaara has been awarded the Fennia Prize Honourable Mention for the year 2020. The Fennia Prize is Finland's most prestigious business design competition.

Lifting column

- High version: 640–1130 mm
- Low version: 540–1030 mm
- General version: 585–885 mm

Dimensions are for slide version. Non-slide version is appr. 10 mm higher.

Seat section

- With or without slide
- With or without motorized leg section joints

Head sections

Standard head sections for standard and kidney-bridge back sections

Optional head sections for beach-chair and eye-ENT back sections

Back section models

- Standard
- Kidney bridge
- Eye-ENT
- Beach chair

Leg sections

- Gas spring assisted divided leg sections length 680 mm
- Gas spring assisted leg section, length 645 mm
- Gas spring assisted divided leg section, length 880 mm
- 25- and 40-sections
- 25-gynaecologic section
- Divided leg sections, 4 section incl. solid pelvic plate,

length 865 mm

- Divided leg section double joint short, length 680 mm
- Light leg sections for motorized and non-motorized legs
- Light foot rest

Surgical table Practico is designed and manufactured in Finland.

Bredde (bordtopp)	540 mm	21,26 in	540 mm	21,26 in	540 mm	21,26 in
Høydejustering	585 - 885 mm	23 - 34,8 in	640 - 1130 mm	25,2 - 44,5 in	540 - 1030 mm	21,3 - 40,6 in
Tillatt arbeidsbelastning (SWL)	280 kg	617,3 lb	280 kg	617,3 lb	280 kg	617,30 lb
Trendelenburg	30 °		30 °		30 °	
Anti-Trendelenburg	30 °		30 °		30 °	
Justering av ryggdel	-40 - 70 °		-40 - 70 °		-40 - 70 °	
Madrassbase (deler)	4-6		4-6		4-6	
Lengdeforskyvning av bordplaten	390 mm	15,4 in	390 mm	15,4 in	390 mm	15,4 in
Sidetilt	-20 - 20 °		-20 - 20 °		-20 - 20 °	
Maks. løftekapasitet	460 kg	1014,13 lb	460 kg	1014,13 lb	460 kg	1014,13 lb
Product Code	145000		145000		145000	